

**ASTRALPOOL** 

 FLUIDRA GROUP

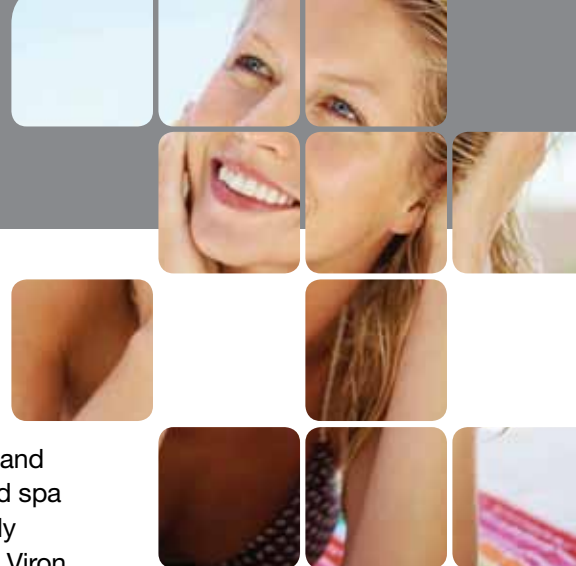
**Viron** 

## Viron Connect

*Connect your lifestyle*



- ✓ **One Touch Favourite Mode**
- ✓ **Pool & Spa Automation**
- ✓ **Integrating all your pool & spa equipment**



## Connect your lifestyle

Your pool and spa are all about enhancing your lifestyle. Whether for fun and entertainment, exercise and health the installation of a swimming pool is one of the most important decisions you are likely to make.

However, today's pools do more than just provide a body of water to swim or relax in. Heaters, waterfalls, colour changing underwater lights all require switches and controls to turn them on and off.

The modern pool and spa can be so complex that often, only one or two people in the house can operate it – and even then they are required to visit the pool equipment at the rear of the property.

Viron Connect is to the swimming pool what home automation is to the modern home. An advanced LCD touch screen interface enables the whole family to use the pool and spa, whenever and however, as it integrates all of the equipment.

Lighting, waterfalls, pool & spa temperature, automatic cleaning systems are all controlled by the Viron Connect and programmed to operate up to four times each day.



### One Touch Favourite Mode

Imagine, its night time and you feel like a hot spa before bed. One touch of your favourite setting on your Viron Connect, and the spa is heating, the lighting is on and massage jets are working. Viron Connect tells you when the temperature is just perfect, and your spa is ready to enjoy.

All your favourite and common pool and spa settings are simply programmed into Viron Connect, so that all the family can enjoy at the touch of a button. Perhaps it's "School Holiday" mode or "Dinner Party" mode, where the lights and water features are operating. Maybe it's "Day Spa" where the family can alternate between the hot spa and cool pool. Up to eight favourite modes can be preset into your Viron Connect to make it flexible, convenient and enable you to obtain the most from your lifestyle investment – the backyard pool.

### Connect to Expansion modules:

Viron Connect is easy to expand. The standard unit allows for 4 separate items of equipment, plus a heater and motorised valve operation. Add the Connect 8 module and this expands to 8 items of equipment, plus heater and motorised valves.

Viron also integrates perfectly with AstralPool's Delta colour changing underwater LED lighting system and the LED colour changing waterfalls – allowing you to select standard colour changing programs or individually blend millions of colours to suit your pool and backyard amenity.

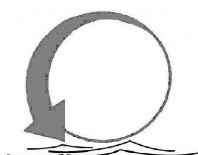
An FM remote control also seamlessly integrates with the Viron Connect and additional external weatherproof control options are also available.

Viron Connect – connects your pool to your lifestyle, is flexible, expandable and most importantly, so easy to use.

Talk to your AstralPool dealer or visit: [astralpool.com.au](http://astralpool.com.au)



### Available from:



## Whiteside Pools

148 Barrington Street, Bibra Lake, WA  
 T: (08) 9434 5034  
 F: (08) 9438 2343  
 E: [sales@wsph.com.au](mailto:sales@wsph.com.au)  
 W: [www.pickapoolpart.com.au](http://www.pickapoolpart.com.au)  
 P: PO Box 1562, Bibra Lake WA 6965

